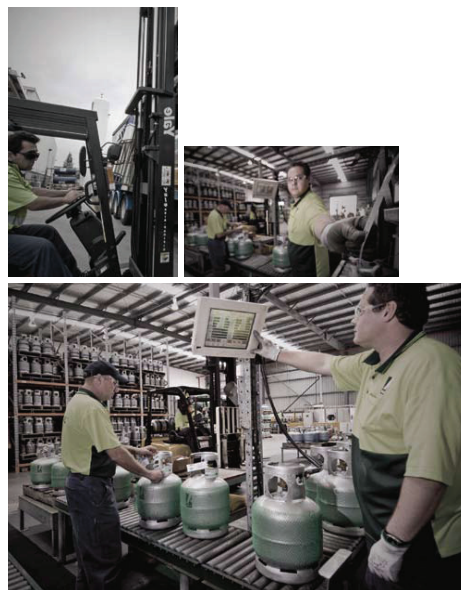


A-Gas is a global supplier of refrigerant gases and speciality chemicals. Our core business focuses on the blending, repackaging, distribution, and lifecycle environmental management of products used as refrigerants, blowing agents and cleaning solvents to different industries.



A-Gas is located in all 5 continents around the globe and are market leaders in Australia, South Africa and the UK. In Australia, A-Gas holds over 500 tonnes of bulk storage capacity at its Laverton North, Victoria facility with a fleet of 120,000 refrigerant cylinders to service the Australian market. These include virgin refrigerant, pump down and reclaim cylinders to ensure product stewardship responsibility. All cylinders are managed through our comprehensive tracking system (Cyltrack).

We also have state of the art filling and blending facilities and a fully equipped site laboratory, all to quality standard ISO 9001 as well as ISO14001 environmental accreditation. A-Gas has the unique capability of importing refrigerants which are tested to ensure it meets both A-Gas and the manufacturer's specifications, blended if necessary and stored in our bulk storage tanks prior to cylinder filling, all in house at its Laverton site. Once filled via a fully automated computer controlled process, cylinders are distributed nationwide to the various automotive workshops via a network of distribution

centres and branches. The advanced technology and the sheer scale of both A-Gas and its distributor's facilities ensure that we can offer product integrity and supply availability throughout the Australian market.

Through our global network A-Gas has formed long term strategic relationships with many key international manufacturers and suppliers and our international focus means we are able to closely follow global trends and therefore identify the best technologies and products for the future including the new proposed replacement for R134a refrigerant in automotive applications namely HFO1234YF.

A-Gas is committed to protecting the global environment, and all aspects of our operations are governed by environmentally sound, strictly enforced procedures. We promote responsible product 'lifecycle' management and employ a user-friendly, reclaim scheme. A large fleet of dedicated reclaim cylinders enables customers to meet their regulatory obligations.



**Gas**

<p><b>OGX395</b> • 12kg • R134a</p> <p><b>TOX1544</b> Cylinder Adaptor <b>TOX1545</b> Fibre Washer to suit</p>	<p><b>OGX293</b> • 12kg • R134a plus</p> <p><b>TOX1544</b> Cylinder Adaptor <b>TOX1545</b> Fibre Washer to suit</p>
<p><b>OGX398</b> • 22kg • R134a</p> <p><b>TOX1544</b> Cylinder Adaptor <b>TOX1545</b> Fibre Washer to suit</p>	<p><b>OGX296</b> • 22kg • R134a plus</p> <p><b>TOX1544</b> Cylinder Adaptor <b>TOX1545</b> Fibre Washer to suit</p>
<p><b>OGX397</b> • 65kg • R134a</p> <p><b>TOX1544</b> Cylinder Adaptor <b>TOX1545</b> Fibre Washer to suit</p>	<p><b>OGX299</b> • 65kg • R134a plus</p> <p><b>TOX1544</b> Cylinder Adaptor <b>TOX1545</b> Fibre Washer to suit</p>
<p><b>EQX0002</b> Gas Cylinder 22kg</p>	<p><b>EQX0004</b> Reclaim Cylinder 22kg</p>
<p><b>TOX8200</b> Battery Operated Weighing Scale <i>Note: Full details, page 533</i></p>	<p><b>EQX69000</b> Recovery Machine <i>Note: Full details, page 529</i></p>

**Gas - TEMPERATURE / PRESSURE RELATION**

**TEMPERATURE - PRESSURE RELATION**

Temperature °C	Pressure R12		Pressure R134a		Temperature °C	Pressure R12		Pressure R134a			
	°F	kPa	psi	kPa		psi	°F	kPa	psi		
-25	-13.0	22.3	3.2	5.1	0.7	43	109.4	931.8	135.1	999.0	144.9
-24	-11.2	27.4	4.0	10.0	1.4	44	111.2	957.0	138.8	1028.3	149.1
-23	-8.4	32.7	4.7	15.0	2.2	45	113.0	982.6	142.5	1058.1	153.5
-22	-7.6	36.1	5.5	20.3	2.9	46	114.8	1008.7	146.3	1088.5	157.9
-21	-5.8	43.8	6.3	25.7	3.7	47	116.6	1035.2	150.1	1119.5	162.4
-20	-4.0	49.5	7.2	31.4	4.6	48	118.4	1062.2	154.1	1151.2	167.0
-19	-2.2	55.5	8.0	37.2	5.4	49	120.2	1089.6	158.0	1183.4	171.6
-18	-0.4	61.6	8.9	43.2	6.3	50	122.0	1117.6	162.1	1216.3	176.4
-17	1.4	68.0	9.9	49.4	7.2	51	123.8	1146.0	166.2	1250.8	181.3
-16	3.2	74.5	10.8	55.9	8.1	52	125.6	1174.9	170.4	1283.9	186.2
-15	5.0	81.2	11.8	62.5	9.1	53	127.4	1204.2	174.6	1318.6	191.2
-14	6.8	88.1	12.8	69.4	10.1	54	129.2	1234.1	179.0	1354.1	196.4
-13	8.6	95.2	13.8	76.5	11.1	55	131.0	1264.5	183.4	1390.1	201.8
-12	10.4	102.5	14.9	83.8	12.2	56	132.8	1295.4	187.9	1426.5	206.5
-11	12.2	110.0	15.9	91.3	13.2	57	134.6	1326.8	192.4	1464.3	212.4
-10	14.0	117.7	17.1	99.1	14.4	58	136.4	1358.7	197.1	1502.4	217.9
-9	15.8	125.6	18.2	107.1	15.5	59	138.2	1391.1	201.8	1541.2	223.5
-8	17.6	133.8	19.4	115.4	16.7	60	140.0	1424.1	206.5	1580.7	229.2
-7	19.4	142.1	20.6	123.9	18.0	61	141.8	1457.6	211.4	1620.9	235.1
-6	21.2	150.7	21.9	132.7	19.2	62	143.6	1491.6	216.3	1661.9	241.0
-5	23.0	159.5	23.1	141.8	20.6	63	145.4	1526.2	221.3	1703.5	247.1
-4	24.8	168.6	24.4	151.1	21.9	64	147.2	1561.3	226.4	1745.9	253.2
-3	26.6	177.8	25.8	160.7	23.3	65	149.0	1597.0	231.6	1789.1	259.5
-2	28.4	187.4	27.2	170.6	24.7	66	150.8	1633.2	236.9	1833.0	265.8
-1	30.2	197.1	28.6	180.7	26.2	67	152.6	1670.0	242.2	1877.7	272.3
0	32.0	207.1	30.0	191.2	27.7	68	154.4	1707.4	247.6	1923.1	278.9
1	33.8	217.4	31.5	201.9	29.3	69	156.2	1745.3	253.1	1969.4	285.6
2	35.6	227.9	33.0	213.0	30.9	70	158.0	1783.9	258.7	2016.4	292.4
3	37.4	238.7	34.6	224.3	32.5	71	159.8	1823.0	264.4	2064.2	299.4
4	39.2	249.8	36.2	236.0	34.2	72	161.6	1862.7	270.1	2112.8	306.4
5	41.0	261.1	37.9	247.9	35.9	73	163.4	1903.0	276.0	2162.3	313.6
6	42.8	272.7	39.5	260.2	37.7	74	165.2	1943.9	281.9	2212.6	320.9
7	44.6	284.5	41.3	272.9	39.6	75	167.0	1985.5	288.0	2263.8	328.3
8	46.4	296.7	43.0	285.8	41.4	76	168.8	2027.6	294.1	2315.9	335.9
9	48.2	309.1	44.8	299.2	43.4	77	170.6	2070.4	300.3	2368.9	343.5
10	50.0	321.8	46.7	312.8	45.4	78	172.4	2113.8	306.6	2422.4	351.3
11	51.8	334.8	48.6	326.8	47.4	79	174.2	2157.9	313.0	2477.1	359.3
12	53.6	348.1	50.5	341.2	49.5	80	176.0	2202.6	319.4	2532.8	367.2
13	55.4	361.7	52.5	355.9	51.6	81	177.8	2247.9	325.9	2589.1	375.3
14	57.2	375.6	54.5	371.0	53.8	82	179.6	2293.9	332.7	2645.5	383.8
15	59.0	389.8	56.5	386.5	56.1	83	181.4	2340.6	339.5	2704.8	392.3
16	60.8	404.4	58.6	402.4	58.4	84	183.2	2387.9	346.3	2764.1	400.9
17	62.6	419.2	60.8	418.6	60.7	85	185.0	2435.9	353.3	2824.3	409.6
18	64.4	434.4	63.0	435.2	63.1	86	186.8	2484.6	360.3	2885.6	418.5
19	66.2	449.9	65.2	452.3	65.6	87	188.6	2534.0	367.5	2947.8	427.5
20	68.0	465.7	67.5	469.7	68.1	88	190.4	2584.1	374.8	3011.1	436.7
21	69.8	481.9	69.9	487.6	70.7	89	192.2	2634.9	382.1	3075.4	446.0
22	71.6	498.4	72.3	505.9	73.4	90	194.0	2686.4	389.6	3140.7	455.5
23	73.4	515.3	74.7	524.6	76.1	91	195.8	2738.6	397.2	3207.2	465.1
24	75.2	532.5	77.2	543.8	78.9	92	197.6	2791.5	404.9	3274.8	474.9
25	77.0	550.0	79.8	563.4	81.7	93	199.4	2845.2	412.6	3343.5	484.9
26	78.8	567.9	82.4	583.4	84.6	94	201.2	2899.6	420.5	3413.4	495.1
27	80.6	586.2	85.0	603.9	87.6	95	203.0	2954.7	428.5	3484.5	505.4
28	82.4	604.9	87.7	624.8	90.6	96	204.8	3010.6	436.6	3557.0	515.9
29	84.2	623.9	90.3	646.3	93.7	97	206.6	3067.2	444.8	3630.9	526.5
30	86.0	643.3	93.3	668.2	96.9	98	208.4	3124.7	453.2	3706.2	537.5
31	87.8	663.1	96.2	690.5	100.1	99	210.2	3182.8	461.6	3782.9	548.7
32	89.6	683.2	99.1	713.4	103.5	100	212.0	3241.8	470.2	3861.1	560.1
33	91.4	703.8	102.1	736.7	106.9	101	213.8	3301.6	478.8	3940.8	571.7
34	93.2	724.7	105.1	760.6	110.3	102	215.6	3362.1	487.6	4022.1	583.5
35	95.0	746.1	108.2	785.0	113.8	103	217.4	3423.3	496.5	4104.9	595.5
36	96.8	767.8	111.4	809.8	117.4	104	219.2	3485.6	505.5	4189.2	607.7
37	98.6	790.0	114.6	835.2	121.1	105	221.0	3548.6	514.7	4275.0	620.1
38	100.4	812.6	117.8	861.2	124.9	106	222.8	3612.4	523.9	4362.3	632.7
39	102.2	835.6	121.2	887.6	128.7	107	224.6	3677.1	533.3	4451.1	645.5
40	104.0	859.0	124.6	914.6	132.6	108	226.4	3742.6	542.9	4541.4	658.5
41	105.8	882.8	128.0	942.2	136.6	109	228.2	3808.9	552.6	4633.2	671.7
42	107.6	907.1	131.6	970.3	140.7	110	230.0	3876.0	562.4	4726.5	685.1

## Gas - CHARGE GUIDE

Vehicle	From	To	OE Unit Grams	Vehicle	From	To	OE Unit Grams
ALFA ROMEO				Coupe	1991	1992	650 or cr - 50
75	1985	1993	710 or cr - 50	Coupe 2.3L	1991	1992	850 or cr - 50
90			710 or cr - 50	Coupe 2.3L	1992	1994	750 or cr - 50
155	1994	1997	700 or cr - 50	Coupe S2	1992	1992	850 or cr - 50
155	1992	1993	850 or cr - 50	Coupe S2 - Zexel compressor	1992	2000	750 or cr - 50
156	1997	2002	650 or cr - 50	Quattro V6	2001	2006	675 or cr - 25
159	2005	2008	550 or cr - 50	Quattro V6	1998	2006	775 or cr - 25
164	1994	1998	710 or cr - 50	Quattro Denso			775 or cr - 25
164	1987	1993	1150 or cr - 50	Quattro Zexel			675 or cr - 25
166	1998	2001	700 or cr - 50	TT (R8)	1998	2006	750 or cr - 50
145, 146 1.3L, 1.4L, 1.6L, 1.7L	1994	1997	700 or cr - 50	<b>BMW</b>			
145, 146 1.7L	1998	2000	640 or cr - 50	1 Series (E87) 116, 118, 120, 118d, 120d Engine: N45, N46, M47	2004	2008	485 or cr - 50
145, 146 Twin Spark	1996	2000	640 or cr - 50	3 Series (E30)	1992	1993	900 or cr - 50
147 1.6, 1.9, 2.0, 1.9, 1.6V 3.2L	2001	2008	550 or cr - 50	3 Series (E36)	1991	1993	900 or cr - 50
155 1.6L, 1.8L, 2.0L, 16V	1993	1997	700 or cr - 50	3 Series (E36) - Denso compressor	1993	2000	900 or cr - 50
155 1.9D	1993	1997	700 or cr - 50	3 Series (E46) Diesel	2001	2004	670 or cr - 50
156 1.9TD	1997	2002	650 or cr - 50	3 Series (E46) Petrol	1998	2004	715 or cr - 50
156 2.4TD	1997	2002	650 or cr - 50	3 Series (E90, E91)	2005	2007	1000 or cr - 50
156 Face Lift	2002	2007	500 or cr - 50	5 Series (E34)	1993	1996	900 or cr - 50
156 Face Lift 2.4TD	2002	2003	500 or cr - 50	5 Series (E34)	1997	1993	900 or cr - 50
156 Face Lift 2.4TD 20V	2003	2006	550 or cr - 50	5 Series (E39) - Seiko compressor	1998	2003	740 or cr - 50
33 (R8)	1983	1994	450 or cr - 50	5 Series (E39) - Seiko compressor	1998	2003	740 or cr - 50
33 (R9) condensers	1995	1997	700 or cr - 50	5 Series (E50) - Seiko compressor	1998	2006	1000 or cr - 50
Alfa Romeo			450 or cr - 25	5 Series (E60, E61)	2003	2006	800 or cr - 50
GT Coupe 1.9TD	2003	2006	600 or cr - 50	5 Series (E63, E64)	2004	2006	800 or cr - 50
GTV 3.0L V6 24V	1999	2004	550 or cr - 50	7 Series (E32) - Denso compressor	1993	1994	1385 or cr - 50
GTV 3.0L V6 24V	1997	1999	650 or cr - 50	7 Series (E32) - Denso compressor with rear AC	1993	1994	1415 or cr - 50
Spider 3.0L V6, GTV 2.0L Turbo	1999	2001	650 or cr - 50	7 Series (E38) - Seiko compressor	1994	1998	1150 or cr - 50
Spider, GTV 1.8L	1999	2001	650 or cr - 50	7 Series (E38) - Seiko compressor	1998	2001	800 or cr - 50
Spider, GTV 2.0L	1999	2001	650 or cr - 50	7 Series (E85)	2002	2005	1750 or cr - 50
Sprint	1987	1991	1150 or cr - 50	8 Series (E31)	1990	1993	1700 or cr - 50
<b>ASTON MARTIN</b>				8 Series (E31) - Denso compressor	1993	1999	1410 or cr - 50
DB7 Vantage 3.2	1994	2004	870 or cr - 50	Mini One, Cooper, Cooper S (R50, S3)	2001	2008	405 or cr - 50
<b>AUDI</b>				X3 (E83)	2004	2007	670 or cr - 50
80	1991	1995	650 or cr - 50	X5 (E53)	2000	2007	430 or cr - 50
80	1986	1991	1000 or cr - 50	Z3 - Denso compressor	1997	2003	970 or cr - 50
90	1987	1992	1000 or cr - 50	Z4 (E99)	2003	2005	730 or cr - 20
100	1992	1997	550 or cr - 50	Z8 (S82)	2000	2004	685 or cr - 50
100	1985	1990	800 or cr - 50	<b>CHEVROLET</b>			
100	1983	1991	800 or cr - 50	Camaro	1998	2002	650 or cr - 50
100	1979	1983	800 or cr - 50	Camaro	1992	1997	750 or cr - 50
100	1976	1979	800 or cr - 50	Corvette	2000	2003	650 or cr - 50
100	1980	1987	800 or cr - 50	Corvette	1991	1996	800 or cr - 50
100, A6, S4, S6	1992	1997	750 or cr - 50	<b>CHRYSLER</b>			
100, A6, S4, S6	1991	1992	1050 or cr - 50	300 C	2004	2006	700 or cr - 50
200 All models			800 or cr - 50	Crossfire	2003	2006	850 or cr - 50
80 2.3L	1992	1994	650 or cr - 50	Crossfire, Crossfire Roadster	2003	2006	850 or cr - 50
80 2.3L	1991	1992	850 or cr - 50	Neon	1995	1999	750 or cr - 50
A2 1.2TDI, 1.4L, 1.4LTDI, 1.6FSI	2001	2006	480 or cr - 50	Neon II	1999	2006	650 or cr - 50
A2 1.2TDI, 1.4L, 1.4LTDI, 1.6FSI	2000	2001	500 or cr - 50	PT Cruiser Diesel	2002	2002	595 or cr - 50
A3 (8L1)	1998	2003	750 or cr - 50	PT Cruiser Diesel	2004	2007	510 or cr - 50
A3 (8P1) 1.6, 1.9, 2.0, 3.2L	05/2003		500 or cr - 50	PT Cruiser Petrol	2002	2003	850 or cr - 50
A4 S4	1994	1997	650 or cr - 50	PT Cruiser Petrol	2000	2002	710 or cr - 50
A6	1998	2001	650 or cr - 50	Voyager	1994	2000	850 or cr - 50
A6	1996	1997	650 or cr - 50	Voyager Petrol	2001	2003	960 or cr - 50
A6 (4F)	2004		510 or cr - 50	Voyager Petrol with rear AC	2001	2003	1210 or cr - 50
A6 1.8, 1.8, 2.4, 2.7, 2.8L	1999	2004	650 or cr - 50	Voyager Petrol with rear AC	2003	2006	1220 or cr - 50
A6 1.9TDI	1999	2004	650 or cr - 50	Voyager with rear AC	1994	2000	1280 or cr - 50
A6 2.0, 3.0L	1999	2004	550 or cr - 50	Voyager Diesel	2003	2006	790 or cr - 50
A6 2.5TDI	1999	2004	650 or cr - 50	Voyager Diesel	2001	2003	910 or cr - 50
A6 V8	1998	1999	550 or cr - 50	Voyager Petrol	2003	2006	880 or cr - 50
A6 V8	1997	2003	650 or cr - 50	<b>CITROEN</b>			
A6 V8	1994	1997	650 or cr - 50	AX	1991	1994	850 or cr - 50
Allroad	2000	2006	870 or cr - 50	AX 1	1994	1997	600 or cr - 50
Coupe	1992	1996	650 or cr - 50	BX	1987	1994	1000 or cr - 50
Coupe	1986	1991	1000 or cr - 50	BX 1.7TD	1988	1994	800 or cr - 50

322

Contents Index

## Gas - CHARGE GUIDE

Vehicle	From	To	OE Unit Grams	Vehicle	From	To	OE Unit Grams
BX 1.6L, GTV 16V - XJUS4 Engine	1987	1993	800 or cr - 50	FIAT			
C1 1.0	2005	2008	420 or cr - 50	Seicento	1997	2007	475 or cr - 50
C1 1.4HDi	2005	2008	470 or cr - 50	Punto	1993	1999	650 or cr - 50
C15 1.4i	1992	1997	900 or cr - 50	Punto (188) 1.2i, 1.2i 16V, 1.9D	1999	2003	525 or cr - 50
C2	2003	2008	575 or cr - 50	Punto (188) 1.9D	1999	2003	525 or cr - 50
C3 1.1i, 1.4i, 1.6i, 1.4HDi, 1.4 16V, 1.4HDi 16V	2002	2008	600 or cr - 50	Punto (188) 1.2i, 1.2i 16V, 1.9D	6/2003		500 or cr - 50
C4 1.4i, 1.6i, 2.0i, 2.0HDi	2004	2008	425 or cr - 50	Punto 1.3TD	6/2003		500 or cr - 50
C5 1.8, 2.0, 3.0	2001	2006	650 or cr - 50	Tipo	1987	1993	850 or cr - 50
C5 2.0HDi	2001	2006	650 or cr - 50	Tipo - Sanden compressor	1994	1995	730 or cr - 20
CB 2.0, 2.2, 3.0, 2.0HDi, 2.2HDi	2002	2006	575 or cr - 50	Tempra - Sankyo compressor	1990	1993	850 or cr - 50
Saxo	1996	1998	575 or cr - 50	Tempra - Sanden compressor	1994	1997	730 or cr - 20
Xantia - Sanden compressor SD7H15	1993	2000	750 or cr - 50	Bravo, Brava - Denso compressor	1995	2000	600 or cr - 50
Xantia 1.5D, 1.9TD	1996	2000	800 or cr - 50	Bravo, Brava 1.9TD	1998	2000	625 or cr - 50
Xantia 3.0L	1997	2000	725 or cr - 50	Manca, Marengo	1998	2002	650 or cr - 50
Xantia - Sanden compressor SD7V16	1993	2000	850 or cr - 50	Croma	1988	1993	1200 or cr - 50
XM	1989	1993	1000 or cr - 50	Croma	1994	1997	1100 or cr - 50
XM 2.0L	1996	2000	700 or cr - 50	Croma 2.2i	2005	2008	700 or cr - 50
XM 2.0L	1993	1996	700 or cr - 50	Croma 1.9TD, 1.9TD 16V	2005	2008	700 or cr - 50
XM 2.1L, 2.2D	1993	1996	700 or cr - 50	Coupe 1.8L	1996	2000	740 or cr - 50
XM 2.1L, 2.2D	1996	2000	700 or cr - 50	Coupe 16V	1994	1997	700 or cr - 50
XM 2.5D	1994	1998	1000 or cr - 50	Coupe 20V Turbo	1996	2001	500 or cr - 50
XM 2.5D	1996	2000	800 or cr - 50	Ulysee	1994	2002	550 or cr - 50
XM V6	1994	2000	700 or cr - 50	Ulysee (179AX)	2002	2008	575 or cr - 50
Xsara 1.6, 2.0, 2.0HDi (RHV)	2000	2006	540 or cr - 50	<b>FORD</b>			
Xsara 2.0HDi (RHZ)	2000	2006	540 or cr - 50	Bronco	1982	1987	800 or cr - 50
Xsara Diesel	1997	2000	850 or cr - 50	Capri (R134A)	1993	1993	550 or cr - 50
Xsara Petrol	1997	2000	850 or cr - 50	Capri SA - SC	1989	1993	550 or cr - 50
Xsara Picasso	1999	2000	825 or cr - 50	Corsair LA	1990	1992	900 or cr - 50
ZK	1993	1998	900 or cr - 50	Cortina TE/TF	1977	1982	300 or cr - 50
ZX	1991	1993	875 or cr - 50	Courier	1983	1993	650 or cr - 50
<b>DAEWOO</b>				Courier PD	1996	1997	650 or cr - 50
Espero	1995	1997	710 or cr - 50	Courier PE	1997	2002	550 or cr - 50
Kalos Delphi, Harrison V5	2002	2007	630 or cr - 45	Econovan Maxi	1984	1993	675 or cr - 45
Lanos	1997	1998	700 or cr - 50	Econovan Maxi 1.8L & 2.0L	1984	1993	675 or cr - 50
Lanos	2001	2003	700 or cr - 50	Econovan Maxi 2.2D	1993	1997	675 or cr - 50
Leganza	1998	2001	700 or cr - 50	Escape	2001	2006	700 or cr - 50
Loganza	1997	2003	810 or cr - 50	Escort	1977	1980	400 or cr - 50
Matiz	1998	2005	500 or cr - 50	Explorer	1997	2006	750 or cr - 50
Matiz	2005	2008	380 or cr - 50	Explorer Dual	1997	2006	900 or cr - 50
Muaso	1999	2003	650 or cr - 50	F100 Series	1981	1981	820 or cr - 50
Nexia	1995	1997	710 or cr - 50	F150 / 200	1988	1988	800 or cr - 50
Nubira	1998	2003	730 or cr - 20	Fairlane FG	2005	2005	475 or cr - 50
Nubira	1997	1998	730 or cr - 20	Fairlane BA	2003	2005	650 or cr - 50
Nubira (2000, J150, J190)	2003	2005	680 or cr - 50	Fairlane AU - NC	1999	2003	850 or cr - 50
<b>DAIMLER</b>				Fairlane NL	1997	1993	850 or cr - 50
Applause (A101)	1997	2003	420 or cr - 50	Fairlane ZF - ZL	1972	1987	800 or cr - 50
Applause (A101)	1993	1997	500 or cr - 50	Falcon FG	2008	2008	475 or cr - 50
Charade (G200)	1997	2003	600 or cr - 50	Falcon BA - BF	2002	2008	650 or cr - 50
Cuore	2003	2005	350 or cr - 50	Falcon AU	1995	2002	850 or cr - 50
Cuore (L701)	1998	2003	350 or cr - 50	Falcon EF - EL	1998	1998	850 or cr - 50
Feroza (F300)	1993	2003	500 or cr - 50	Falcon ED (R134A)	1993	1994	850 or cr - 50
Gran Move (G301)	1998	2003	370 or cr - 50	Falcon EA - FB	1988	1991	850 or cr - 50
Gran Move (G300)	1996	1998	500 or cr - 50	Falcon XF, XG, XH, XH Lite	1984	1989	8

## Gas - CHARGE GUIDE

Vehicle	From	To	OE Unit Grams	Vehicle	From	To	OE Unit Grams
LX450	1996	1997	750 + or -50	Tribute YU	2001	2006	850 + or -50
LX470	1998	2006	800 + or -50	<b>MERCEDES BENZ</b>			
LX470 with Cooler Box	1998	2006	1150 + or -50	180	1991	1993	1000 + or -50
RX300	1999	2001	550 + or -50	190	1985	1992	1000 + or -50
RX300	2003	2005	550 + or -50	220	1968	1981	1000 + or -50
SC300	1992	1997	750 + or -50	240	1986	1981	1000 + or -50
SC300	1996	2002	800 + or -50	240	1974	1982	1000 + or -50
SC400	1992	1993	850 + or -50	250	1968	1978	1000 + or -50
SC400	1994	1996	800 + or -50	260	1988	1991	1000 + or -50
SC430	2001	2005	475 + or -25	280	1972	1976	1000 + or -50
MAZDA				300	1968	1993	1000 + or -50
121	1987	1993	450	350	1971	1976	1000 + or -50
121DA	1993	1996	850 + or -25	380	1980	1986	1000 + or -50
121 Metro	1996	1997	850 + or -25	400	1986	1992	1000 + or -50
121	1996	2002	800 + or -25	450	1973	1980	1000 + or -50
323	1981	1985	650	500	1990	1993	1000 + or -50
323	1985	1987	650	560	1986	1992	1000 + or -50
323	1989	1993	700	280C	1972	1973	1000 + or -50
323 BJ	1998	2003	625	280CE	1972	1986	1000 + or -50
323 Protege	1994	1998	725	280E	1968	1973	1000 + or -50
323 Astra D	1996	1998	750	280SE	1973	1986	1000 + or -50
626 NZevl	1983	1987	700	280SE	1968	1969	800
626	1987	1991	850 + or -100	280SE 3.5L	1971	1973	1000 + or -50
626	1991	1994	700	280SE 3.5L	1969	1971	800
626 GE	1993	1997	700 + or -50	280SEL	1968	1981	1000 + or -50
626 GE	1998	2000	650 + or -50	280SL	1975	1976	1000 + or -50
929	1976	1993	650 + or -50	280SL	1968	1971	800
929	1991	1995	650 + or -50	280SLC	1975	1976	1000 + or -50
B Series Lite	1985	1986	850 + or -50	280T	1980	1983	1000 + or -50
B Series Lite	1993	2002	550 + or -50	300GD	1982	1989	1000 + or -50
B Series Lite	2002	2006	850 + or -50	A Class W168	1998	2005	600 + or -30
B2800	2003		650 + or -25	C Class W201, W202	1994	1997	850 + or -50
Bravo	1993	1999	550 + or -25	C Class W203	2004	2006	850 + or -50
Bravo	1999	2002	550 + or -25	C Class W203	2000	2004	700 + or -50
Bravo	2007		850 + or -50	C200	1997	2000	750 + or -50
E Series Van	1984	1993	850 + or -25	C280	1994	2003	750 + or -50
E Series Van Dual	1984	1993	1000 + or -50	CL600	1998	2003	1050 + or -50
E Series Van	1993	2000	500 + or -25	CL600	1998	2003	1150 + or -50
E Series Van Dual	1993	2000	1330 + or -50	CLX Class C208, A208	1997	2003	850 + or -50
30X	1992	1993	720	CLX Class C209	2002	2006	750 + or -50
Eunos 30X	1993	1997	800 + or -25	CLX320	1998	1999	700 + or -50
Eunos 500 V6	1993	1999	700 + or -25	CS900	1995	2000	1100 + or -50
Eunos 800	1994	2000	750 + or -25	CS600 Dual	1995	2000	1200 + or -50
Mazda 2	2002	2006	470 + or -25	E Class W124, W210	1994	1997	950 + or -50
Mazda 3	2002	2006	500 + or -25	E Class W210	1998	2002	1000 + or -50
Mazda 5	2002	2006	430 + or -25	E Class W211	2002	2006	950 + or -50
Mazda CX7	2006		525 + or -10	E300	1985	1993	900 + or -50
Mazda CX9	2007		690 + or -10	E300 Dual	1985	1993	1125 + or -50
MPV	1994	1999	1050 + or -50	E320	2001	2003	900 + or -50
MPV Dual	1994	1999	1150 + or -50	E330	1994	2000	850 + or -50
MPV	1999	2002	650 + or -25	E420	1994	1997	850 + or -50
MPV Dual	1999	2002	850 + or -25	E430	1998	2000	850 + or -50
MX6	1994	1996	550 + or -50	E500	1994	1996	850 + or -50
MX6 R134a	1989	1993	600 + or -50	M Class W163	1998	2005	750 + or -50
MX6	1994	2001	600 + or -50	ML350	1998	2003	850 + or -50
MX6	2002	2005	350 + or -25	ML430	1999	2000	750 + or -50
MX6	1987	1993	720 + or -50	S Class	1991	1999	1150 + or -50
MX6	1993	1997	720 + or -50	S Class W140	1994	1999	1150 + or -50
Protege	1995	2003	500 + or -50	S Class W220	1999	2006	950 + or -50
Protege	2001	2003	515 + or -25	S Class W220 Dual	1999	2006	850 + or -50
R Series	1976	1979	875 + or -25	SL Class R129	1994	1999	950 + or -50
RX5	1976	1979	720 + or -50	SL500	1990	2001	800 + or -50
RX7	1979	1993	650 + or -50	SL600	1994	2001	800 + or -50
RX7	1993	1996	550 + or -50	SLK	2001		700 + or -50
RX8	2003	2006	430 + or -25	SLK Class R170	2000	2004	850 + or -50

326

Contents Index

## Gas - CHARGE GUIDE

Vehicle	From	To	OE Unit Grams	Vehicle	From	To	OE Unit Grams
SLK230	1998	2003	700 + or -50	Verada KR	1991	1993	750 + or -25
SLK230	1998	2003	750 + or -50	Verada KS	1994	1996	750 + or -25
Sprinter	1998	2006	810 + or -50	Verada KE - KF	1996	1998	675 + or -25
Vito	1998	2004	800 + or -50	Verada KH	1999	2000	650 + or -25
Vito NCV2	2004	2006	550 + or -30	Verada KL - KW	2000	2003	650 + or -25
MC				<b>HONDA</b>			
F	1997	2002	620 + or -30	120V	1977	1978	585 + or -50
TF 1.6L			620 + or -30	180B	1974	1977	575 + or -25
TF 1.8L			720 + or -30	200B	1978	1981	580 + or -50
TR - TS	2004	2005	640 + or -30	200SX	1994	2000	550 + or -50
TZ	2002	2005	450 + or -30	200SX	2000	2002	450 + or -50
<b>MINI</b>				240K	1974	1978	650 + or -25
380	2005	2006	455 + or -30	260C	1974	1978	775 + or -25
3000GT	1991		775 + or -25	260Z	1974	1978	625 + or -25
Challenger PA	1998	2006	825 + or -25	280C	1978	1984	800 + or -50
Coil RA - RE	1980	1990	650	280ZX	1980	1984	850 + or -50
Coil RG	2004	2006	550 + or -30	300C	1980	1986	850 + or -50
Cordia AA - AC	1983	1989	775 + or -25	300ZX	1984	1989	850 + or -50
Delica			1200	300ZX	1990	1993	800 + or -50
Express SF - SH	1988	1993	675 + or -25	300ZX	1993	1996	810 + or -50
Express SF - SH Dual	1986	1993	950 + or -50	350Z	2002	2006	475 + or -25
Express Dual	1994	1994	950 + or -50	720	1980	1980	675 + or -25
Express	1997	2005	725 + or -25	Bluebird	1981	1986	700 + or -50
Galant E30	1989	1993	880 + or -50	Bluebird U13 (R134a)	1993	1997	750 + or -50
Galant HG - HH	1989	1993	880 + or -50	EAX N13			900 + or -50
Galant JH	1986	1991	775 + or -25	Gazelle	1984	1989	800 + or -50
Galant R134a	1994		775 + or -25	GTR	1991	1993	625 + or -50
Grandis	2004	2006	560 + or -25	Infinity	1993	1997	800 + or -50
Grandis Dual	2004	2006	700 + or -25	Maxima	1990	1993	770 + or -50
L200 MA - MD	1982	1986	770 + or -50	Maxima A32	1995	2001	625 + or -25
L300 SC - SE	1983	1986	675 + or -25	Maxima A33	2001	2003	675 + or -25
L300 SC - SE Dual	1983	1987	950 + or -50	Maxima J31	2003	2006	500 + or -25
L300	2000		625 + or -25	Micra	1995	1997	525 + or -25
L400	2000		650 + or -25	Micra	2000		450 + or -25
L400 Dual	2000		1150 + or -25	Murano	2003	2006	450 + or -25
Lancer CA - CB	1988	1992	660 + or -50	Navara	1986	1993	775 + or -25
Lancer CE Series 1 and 2	1996	1998	660 + or -50	Navara D21	1982	1986	800 + or -50
Lancer CC	1992	1993	650 + or -25	Navara D22	1992	1997	800 + or -50
Lancer CC Hatch	1992	1996	650 + or -25	Navara D22	1997	2006	550 + or -50
Magna TM - TR	1985	1993	630 + or -50	Navara T1	2005	2007	650 + or -50
Magna TS	1994	1996	675 + or -25	Nomad	1986	1992	725 + or -25
Magna TE - TF	1998	1998	675 + or -25	Nomad Dual	1986	1992	1000 + or -50
Magna TH	1999	2000	630 + or -50	NX Coupe	1991	1993	575 + or -25
Magna TR	2000	2003	630 + or -50	NX Coupe B13	1993	1997	590 + or -50
Magna TL - TW	2003	2005	675 + or -20	Pathfinder	1986	1993	775 + or -25
Mirage	2006	2006	580 + or -50	Pathfinder B51	1996	2004	575 + or -25
Mirage	1997	2002	475 + or -25	Pathfinder	2005	2007	700 + or -50
Nimbus UA - UF	1984	1984	650 + or -50	Patrol	1980	1993	800 + or -50
Nimbus UF (R134a)	1993	1998	775 + or -50	Patrol Dual	1988	1993	1000 + or -50
Outlander ZE - ZF	2003	2006	550 + or -20	Patrol Y60 QG	1994	1997	600 + or -50
Pajero NA - NH	1983	1993	800 + or -30	Patrol Y60 Dual	1994	1997	1080 + or -50
Pajero NA - NH Dual	1983	1993	950 + or -50	Patrol Y61 GU	1997	2006	800 + or -50
Pajero NJ - NL	1993	2000	750 + or -50	Patrol Y61 GU Dual	1997	2006	1000 + or -50
Pajero NM - NP	2000	2006	550 + or -50	Patrol Cab Chassis	2000	2006	550 + or -50
Pajero OD - OA	1998	2002	570 + or -20	Pintara	1986	1989	900 + or -50
Scorpion GJ - GL	1981	1985	770 + or -50	Pintara	1989	1993	700 + or -50
Sigma GE - GN	1977	1987	790 + or -50	Prairie	1982	1985	725 + or -25
Station JA - JD	1982	1987	880 + or -50	Prairie Dual	1982	1985	975 + or -25
Starwagon SF - SH	1982	1987	1300 + or -50	Pulsar	1981	1994	810 + or -50
Starwagon	1993	2002	700 + or -25	Pulsar N15	1993	2000	650 + or -50
Starwagon Dual	1993	2002	1200 + or -50	Pulsar N16	1993	2000	500 + or -50
Triton ME - MJ	1986	1993	770 + or -50	Sarena	1992	1993	500 + or -50
Triton MJ	1994	1997	720 + or -50	Sarena Dual	1992	1993	700 + or -50
Triton MK	1997	2004	575 + or -25	Sarena	1992	1997	1100 + or -50
Triton	2005	20					



# Gas - CHARGE GUIDE

Vehicle	From	To	OE Unit Grams	Vehicle	From	To	OE Unit Grams
Paseo	1991	1996	675 + or - 25	Vento	1995	1997	800 + or - 50
Paseo	1996	2002	575 + or - 25	<b>VOLVO</b>			
Prado	1996	2002	750 + or - 50	200 R134a	1994		650 + or - 50
Prado Dual	1996	2002	975 + or - 25	240	1975	1978	750
Prado	2003	2006	650 + or - 50	240	1979	1990	800
Prado Dual	2003	2006	800 + or - 50	240	1991	1992	750
Prado Dual with Ice Box	2003	2006	900 + or - 50	240	1993	1994	950
Prius NHW11R	2000	2003	500 + or - 50	260	1975	1978	750
Prius NHW202	2003	2006	450 + or - 30	260	1979	1986	850
RAV4 10	1994	2000	675 + or - 25	360	1984	1987	800
RAV4 20	2000	2006	475 + or - 25	400 R134a	1994		650 + or - 50
Spacia	1992	1993	610	440	1993	1996	650 + or - 50
Spacia Dual	1992	1993	1025 + or - 25	740	1991		1080 + or - 50
Spacia YR2ZRG	1993	1997	650	760	1989	1990	800
Spacia SRV0	1998	2001	750 + or - 50	760	1991		790 + or - 50
Sprinter	1993	1997	675	850 R134a	1991	1997	900 + or - 50
Starlet EP91R	1996	1999	600 + or - 50	900 R134a			800 + or - 50
Supra MA61	1983	1985	630 + or - 50	940	1991	1992	900 + or - 50
Supra MA70	1986	1993	720 + or - 50	940	1993	1996	900 + or - 50
T18	1983		630 + or - 30	960	1991	1992	900 + or - 50
Tarago	1982	1989	630 + or - 30	960	1994	1998	900 + or - 50
Tarago Dual	1982	1989	900 + or - 50	C70	1998	2001	725 + or - 25
Tarago	1990	1993	855 + or - 50	C70	2002	2004	825 + or - 25
Tarago Dual	1990	1993	1080 + or - 50	S40	1997	2004	800 + or - 50
Tarago	1993	2000	900 + or - 50	S40	2004	2006	550 + or - 50
Tarago Dual	1993	2000	1150 + or - 50	S60	2000	2006	1000 + or - 50
Tarago	2000	2006	680 + or - 40	S70	1997	2000	800 + or - 50
Tarago Dual	2000	2006	880 + or - 30	S80	1998	2005	1000 + or - 50
Tercel	1985	1988	630 + or - 45	V40	1997	2004	850 + or - 50
TownAce	1993	1997	900 + or - 50	V60	2004	2006	550 + or - 50
TownAce Dual	1993	1997	1100 + or - 50	V70	1997	2000	800 + or - 50
Yaris	2005	2006	360	V70	2000	2006	1000 + or - 50
<b>TRIUMPH</b>				V90	1994	1998	900 + or - 50
Slag	1972	1975	750	XC70	2003	2006	1000 + or - 50
TR9	1979	1982	750	XC90	2003	2006	1000 + or - 50
<b>VOLKSWAGEN</b>							
Beetle	1998	2002	575 + or - 25				
Beetle	2000	2002	700 + or - 50				
Bora	1999	2006					
Cabrio	1995	2002	675 + or - 25				
Caravelle	1990	1993	675 + or - 25				
Caravelle Dual	1990	1993	900 + or - 50				
Golf	1980	1982	855				
Golf Cabriolet	1990	1993	470				
Golf Cabriolet	1999	2003	800 + or - 50				
Golf GTI	1990	1993	490				
Golf	1994	1998	675 + or - 25				
Golf	1998	2004	750 + or - 50				
Golf	2004	2006	525 + or - 25				
Jetta	1985	1992	750 + or - 50				
Passat	1980	1982	455				
Passat	1990	1991	500 + or - 50				
Passat	1990	1992	825 + or - 25				
Passat	1991	1995	675 + or - 25				
Passat III	1995	1997	525 + or - 25				
Passat IV	1997	2000	525 + or - 25				
Passat GP	2001	2005	600 + or - 25				
Passat GP WB	2003	2005	510 + or - 25				
Passat Denso	2002		525 + or - 25				
Polo	1996	2001	860 + or - 50				
Polo	2002	2006	550 + or - 25				
Touareg	2003	1006	725 + or - 25				
Touareg Dual	2003	2006	1075 + or - 25				
Transporter Sanden	1993	2004	950 + or - 50				
Transporter Sanden	2004	2006	975 + or - 25				
Transporter Denso	2004	2006	775 + or - 25				

### OGX395

- 12kg
- R134a



- TOX1544** Cylinder Adaptor
- TOX1545** Fibre Washer to suit



### TOX8200

Battery Operated Weighing Scale

Note: Full details, page 533

